

THIS PLAT IS NOT A SUBDIVISION AS DEFINED BY THE GREENVILLE COUNTY SUBDIVISION REGULATIONS.

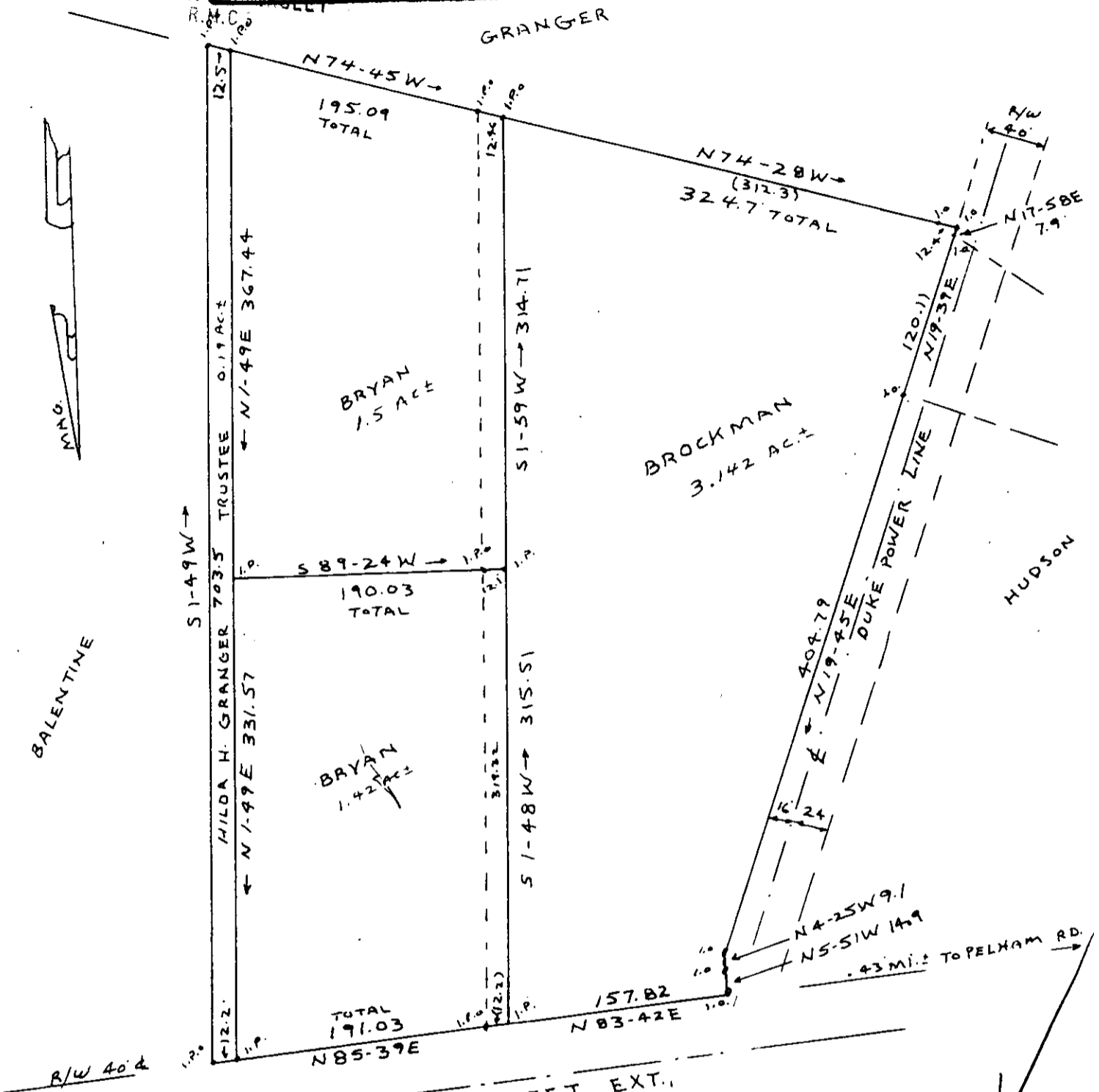
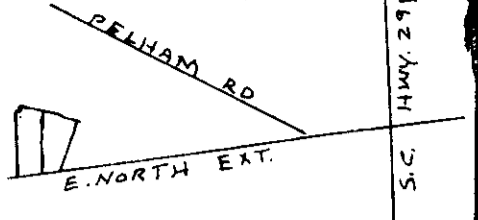
MICROFILMED

GREENVILLE

DEC 3 10 52 AM '81

DONNIE S. WANKERSLEY

Stephen W. Tanner
 Chairman, Secretary, or Director of
 Planning, Associate Planner
 Greenville County Planning Commission



13332 A COMPILED PLAT OF
 J-W-91 M.E. BROCKMAN
 CECIL BRYAN
 HILDA H. GRANGER TR.
 NEAR THE CITY OF GREENVILLE
 GREENVILLE COUNTY S.C.
 WEBB SURVEYING & MAPPING CO.
 SCALE 1" = 100' JULY 1981

THIS IS NOT A SUBDIVISION
 IT IS TO COMPIRE OTHER
 PLATS OF RECORD AND
 WAS COMPILED FROM OTHER
 SURVEYS AND PLATS AND
 TO CLARIFY LINE BETWEEN
 BROCKMAN AND BRYAN

DEC 3 1981

THIS PLAT FOR RECORDING

3000 8 11241801

BLK. BK. REF. 279-1-4, 5A, 5.5 P. 5